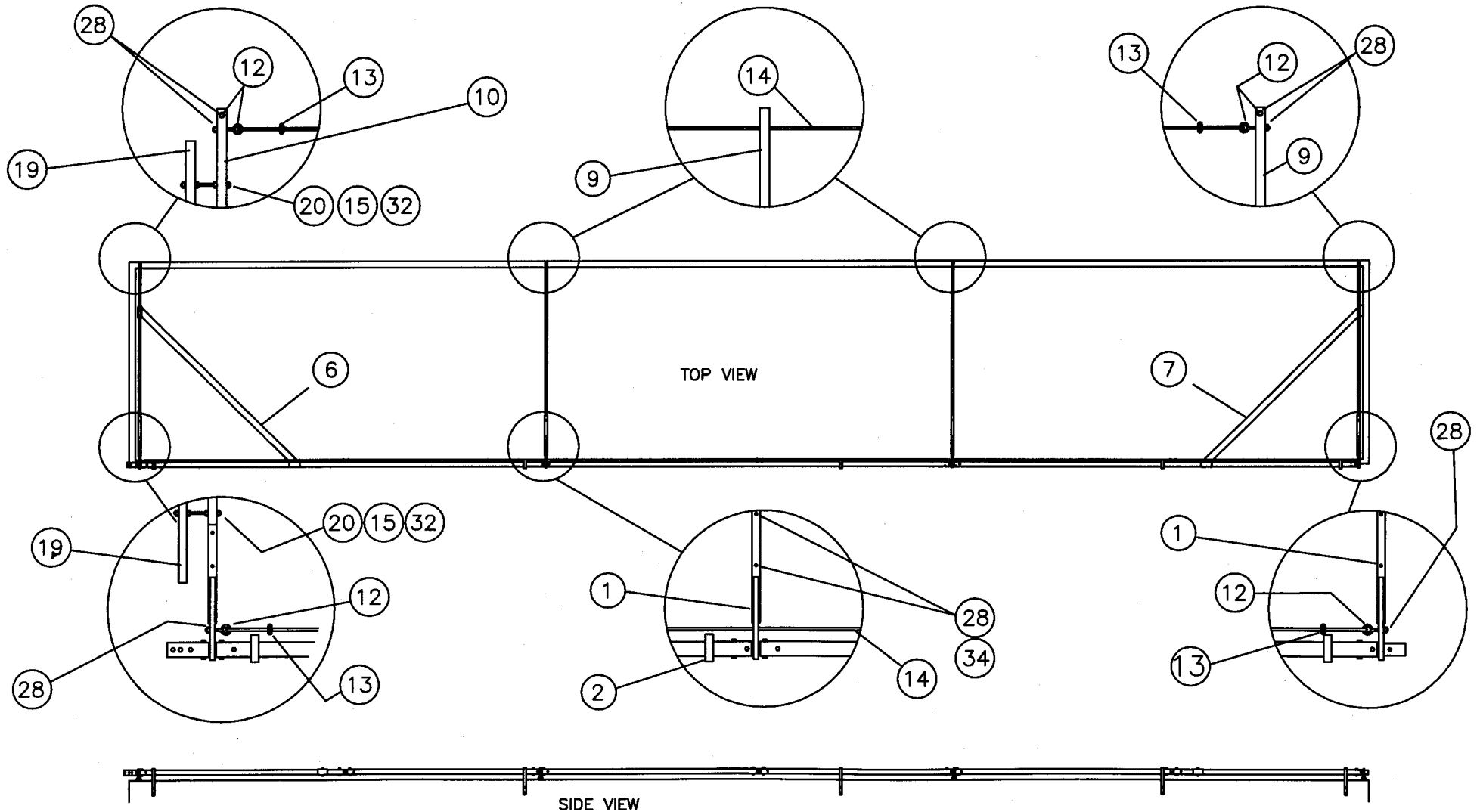
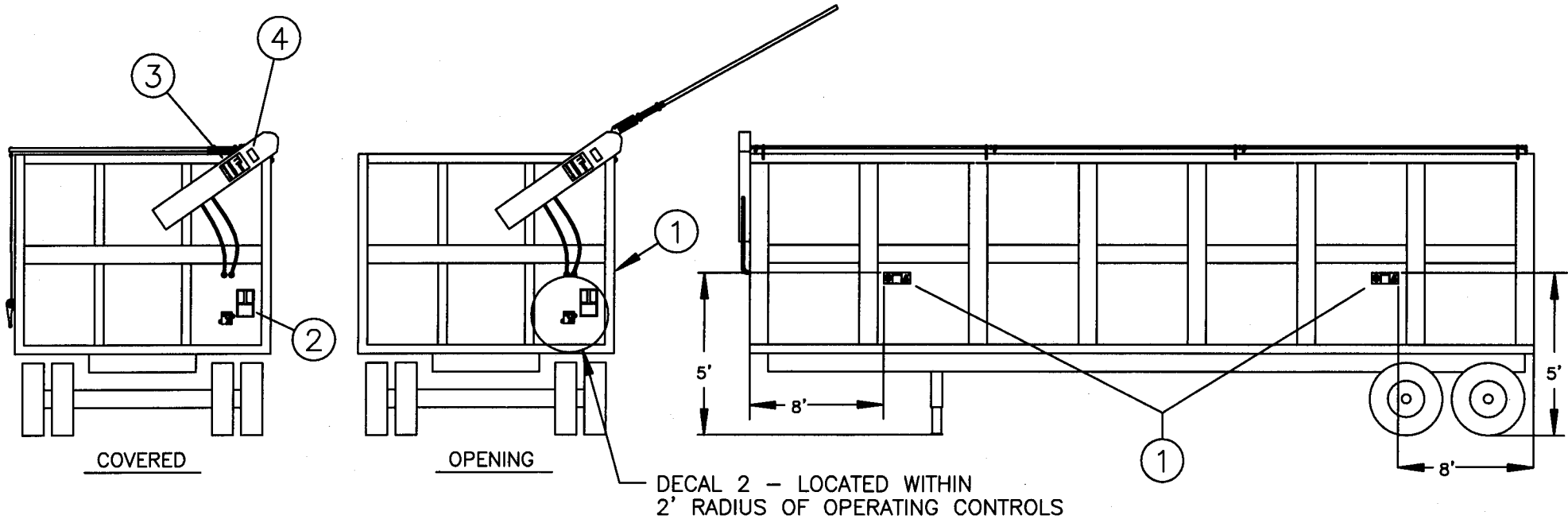


9	FT014	BOW	18	FT018M	VALVE BLOCK	27		1/4 x 1" TECH SCREW	37	FT035	PLASTIC INSULATOR STRIP
8	FT009	ROTARY ACTUATOR	17	FT029	RATCHET	26	FT030	2 x 10' STRAP W/ HOOK	36	5/8-11	STOVER LOCK NUT
7	FT019R	CORNER BRACE (LAST)	16		1/2" FLAT WASHER	25	FT015	TARP	35	5/8-11x7	HHCS
6	FT019F	CORNER BRACE (FIRST)	15		3/8 LOCK WASHER	24	WINT14	14" WIRE TIE	34	3/8-16x2-1/2	HHCS
5	FT020	AXLE CONNECTOR	14	G1995	WIRE ROPE (COATED)	23	FT028	VALVE MOUNTING GROMMET	33	1/4-20x1	FLAT HEAD CAP
4	FT021	ADAPTER SLEEVE	13	G1994	CABLE CLAMP	22	FT027	BACKING PLATE	32	3/8-16	HEX NUT
3	FT010	AXLE SECTIONS 8'	12	G1993	EYE BOLT	21	FT025	HOSE GROMMET	31	1/2-13 x 3 1/2	HHCS GRB
2	FT007	HINGE W/ BUSHING	11	FT026	SERRATED WASHER	20	FT024	FALSE BOW JACK SCREW	30	1/2-13 x 3	HHCS GRB
1	FT006	BOW ANCHOR	10	FT014L	BOW (LEAD)	19	FT023	FALSE BOW	29	1/2-13	STOVER NUT
									28	3/8-16	STOVER NUT

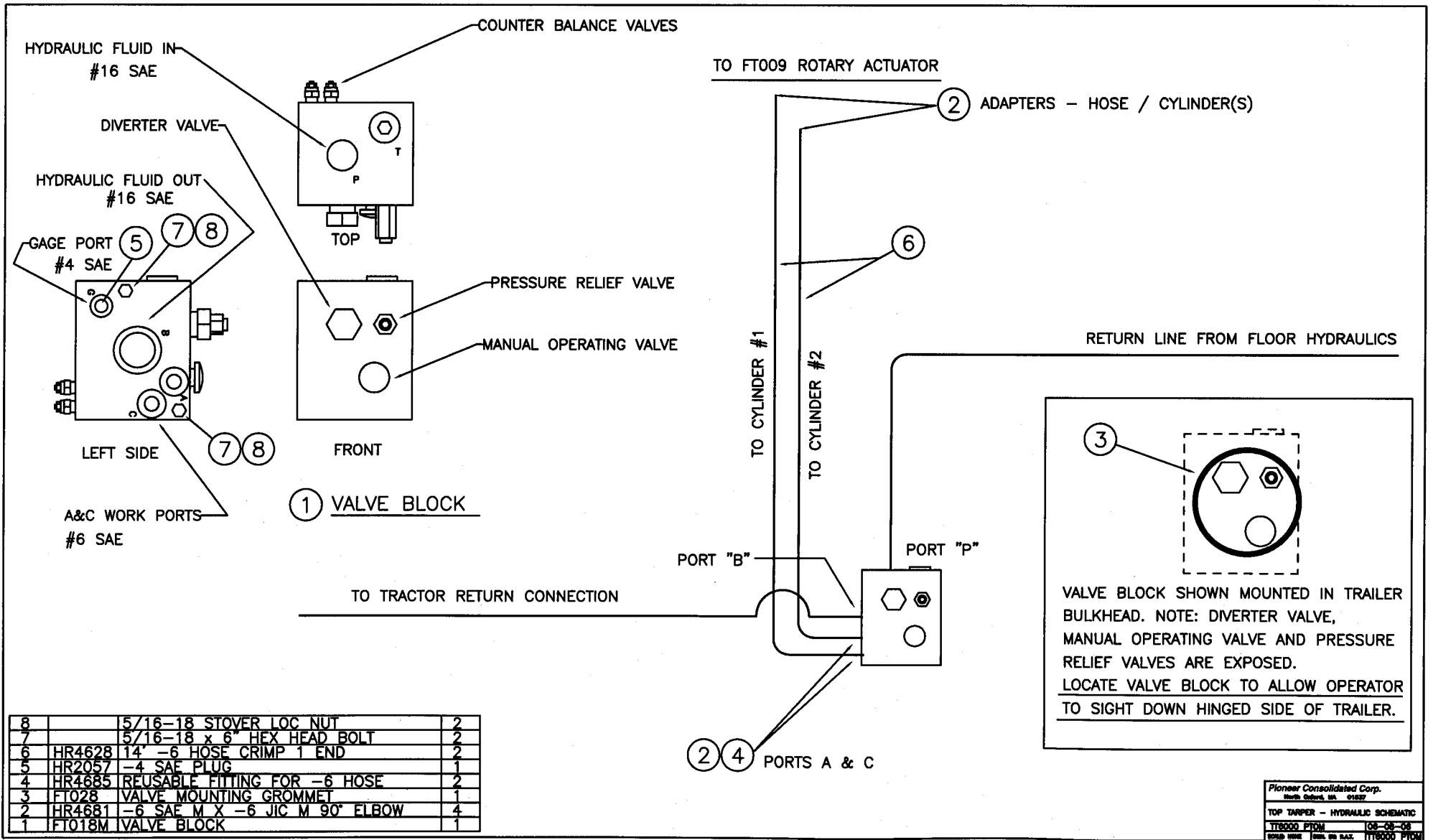


NOTE TO THE INSTALLER: UPON COMPLETION OF THE INSTALLATION YOU MUST AFFIX THE SAFETY / WARNING / OPERATING DECALS AT THOSE LOCATIONS DETAILED HERE. SHOULD ANY OF THE DECALS BECOME UNREADABLE OR DAMAGED CONTACT PIONEER FOR REPLACEMENTS.



THIS SYSTEM CANNOT BE OPERATED UNTIL ALL SAFETY LABELS ARE INSTALLED PER THE INSTRUCTIONS.

4	CGD-ANSI	CHAIN GUARD WARNING DECAL
3	TTDECAL	PIONEER FRONT DECAL
2	TT6000FD	WARNING / CAUTION / OPERATING
1	TT6000SD	WARNING CRUSH HAZARD SIDE DECAL



8		5/16-18 STOVER LOC NUT	2
7		5/16-18 x 6" HEX HEAD BOLT	2
6	HR4628	14' -6 HOSE CRIMP 1 END	2
5	HR2057	-4 SAE PLUG	1
4	HR4685	REUSABLE FITTING FOR -6 HOSE	2
3	FT028	VALVE MOUNTING GROMMET	1
2	HR4681	-6 SAE M X -6 JIC M 90° ELBOW	4
1	FT018M	VALVE BLOCK	1